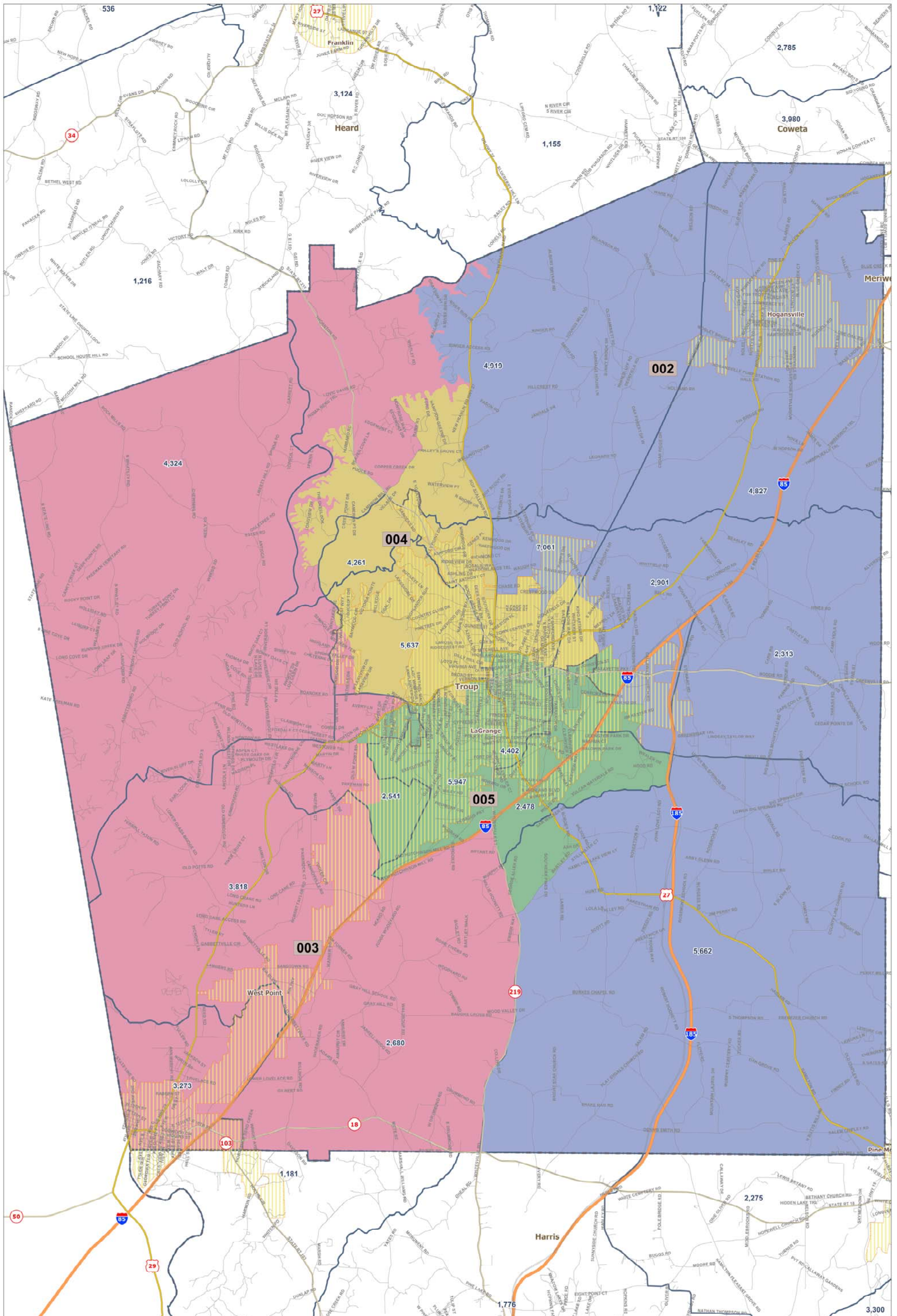


Troup County Proposed Districts

Client: Troup
Plan: trouppcc-prop1-
tiger2010edata
Type: Local



Legislative & Congressional
Reapportionment Office
Georgia General Assembly



Plan Name: **troupcc-prop1-Tiger2010E**

Plan Type :

User: **admin**

Administrator: **admin**

DISTRICT	POPULATION	DEVIATION	% DEVIATION	BLACK	% BLACK	TOTAL BLACK	%TOTAL BLACK	HISP. OR LATINO	%HISP
002	16,831	70	0.42%	3,171	18.84%	3,300	19.61%	358	2.13%
VAP	12,414			2,262	18.22%	2,295	18.49%	200	1.61%
003	16,628	-133	-0.79%	3,774	22.70%	3,884	23.36%	297	1.79%
VAP	12,255			2,639	21.53%	2,673	21.81%	185	1.51%
004	16,763	2	0.01%	4,798	28.62%	4,934	29.43%	719	4.29%
VAP	12,453			3,235	25.98%	3,266	26.23%	461	3.70%
005	16,822	61	0.36%	10,651	63.32%	10,854	64.52%	796	4.73%
VAP	12,120			7,482	61.73%	7,535	62.17%	513	4.23%

Total Population: 67,044

Ideal Value: 16,761

Summary Statistics

Population Range: 16,628 to 16,831

Absolute Range: -133 to 70

Absolute Overall Range: 203

Relative Range: -0.79% to 0.42%

Relative Overall Range: 1.21%